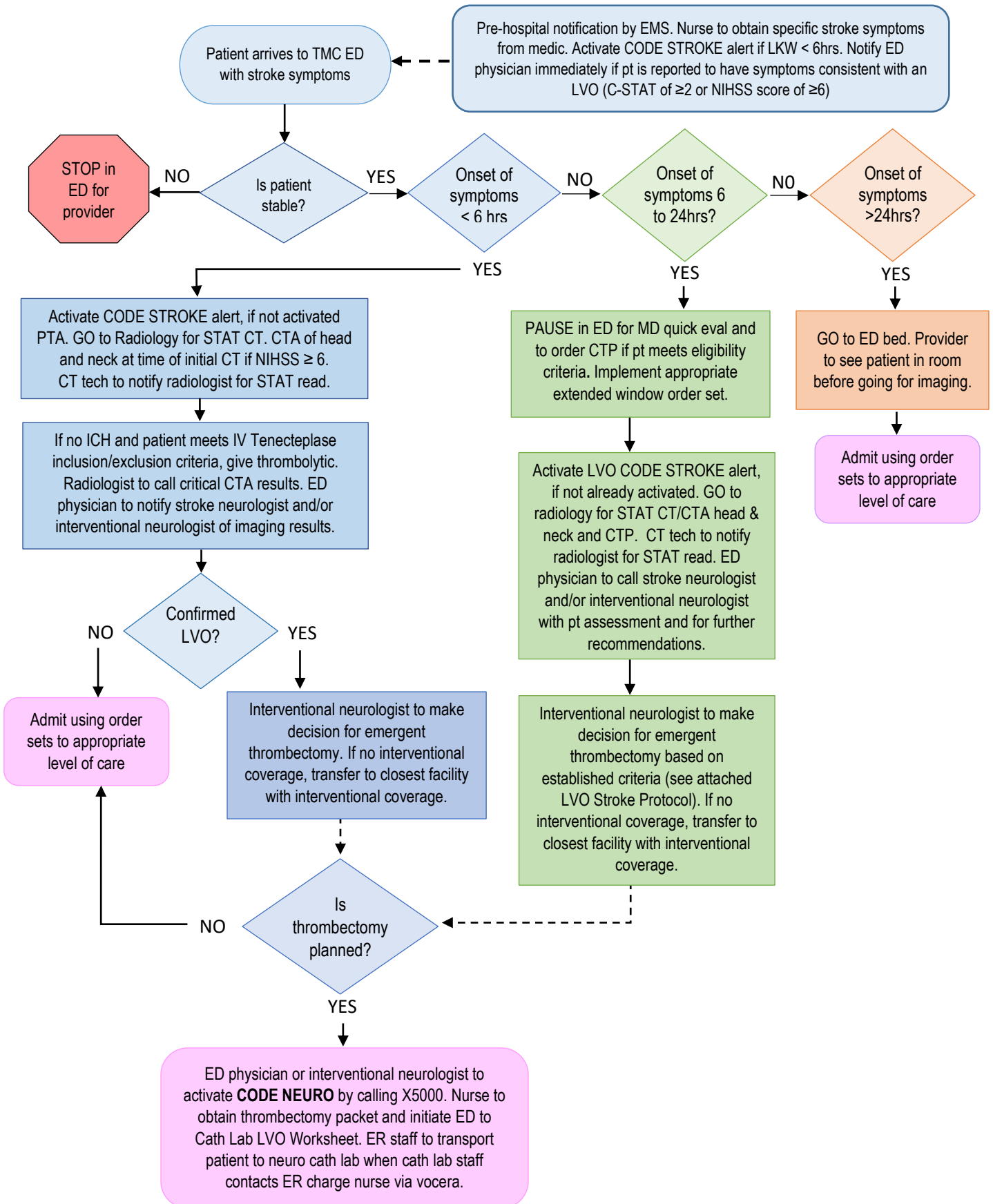


LVO Stroke Protocol



LVO Stroke Protocol

Thrombectomy Inclusion/Exclusion Criteria

Thrombectomy Criteria 0-6 hours from LKW:

- ✓ Confirmed occlusion of a large vessel (anterior or posterior circulation)
- ✓ ≥ 18 yrs
- ✓ Treatment can be initiated within 6 hours of LKW

Thrombectomy Criteria 6-16 hours from LKW (DEFUSE 3 Criteria):

- ✓ **NIHSS ≥ 6**
- ✓ Age 18 – 90 yrs
- ✓ **mRS of 0-2 at baseline***
- ✓ Confirmed occlusion of carotid, MCA, or both
- ✓ ASPECTS ≥ 6
- ✓ No evidence of ICH on imaging
- ✓ Ischemic core volume of < 70 ml
- ✓ Mismatch ratio of > 1.8 (ischemic core to penumbra)
- ✓ Mismatch volume of > 15 ml
- ✓ Treatment can be initiated within 16 hours of LKW

*Modified Rankin Scale (mRS)	
0	No symptoms
1	No significant disability; able to carry out usual activities despite some symptoms
2	Slight disability; able to look after own affairs, but unable to carry out all activities independently
3	Moderate disability; requires some help, but able to walk unassisted
4	Moderately severe disability; unable to attend to own bodily needs without assistance
5	Severe disability; requires constant nursing care and attention
6	Dead

Thrombectomy Criteria 16-24 hours from LKW (DAWN Criteria):

- ✓ **NIHSS ≥ 10**
- ✓ ≥ 18 yrs
- ✓ **mRS of 0-1 at baseline***
- ✓ Confirmed occlusion of carotid, MCA, or both
- ✓ No evidence of ICH on imaging
- ✓ Treatment can be initiated within 24 hours from LKW
- ✓ No evidence of stroke involving $> 1/3$ of the MCA territory
- ✓ Meets all of the criteria in ONE of the following groups:

Group A
1. ≥ 80 yrs old
2. NIHSS ≥ 10
3. Ischemic core < 21 ml

Group B
1. < 80 yrs old
2. NIHSS ≥ 10
3. Ischemic core < 31 ml

Group C
1. < 80 yrs old
2. NIHSS ≥ 20
3. Ischemic core < 51 ml